

# MONTHLY MEMBERSHIP PROGRESS REPORT

District 318 E

Results as of: 3/31/2024

GMT:

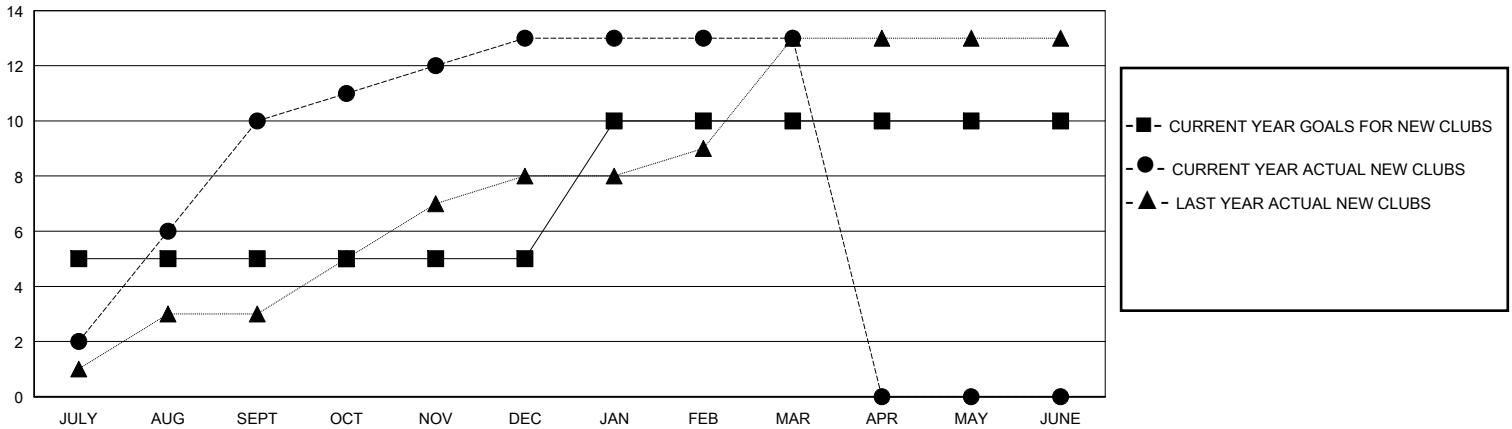
LOCATION INDIA

GMT CA

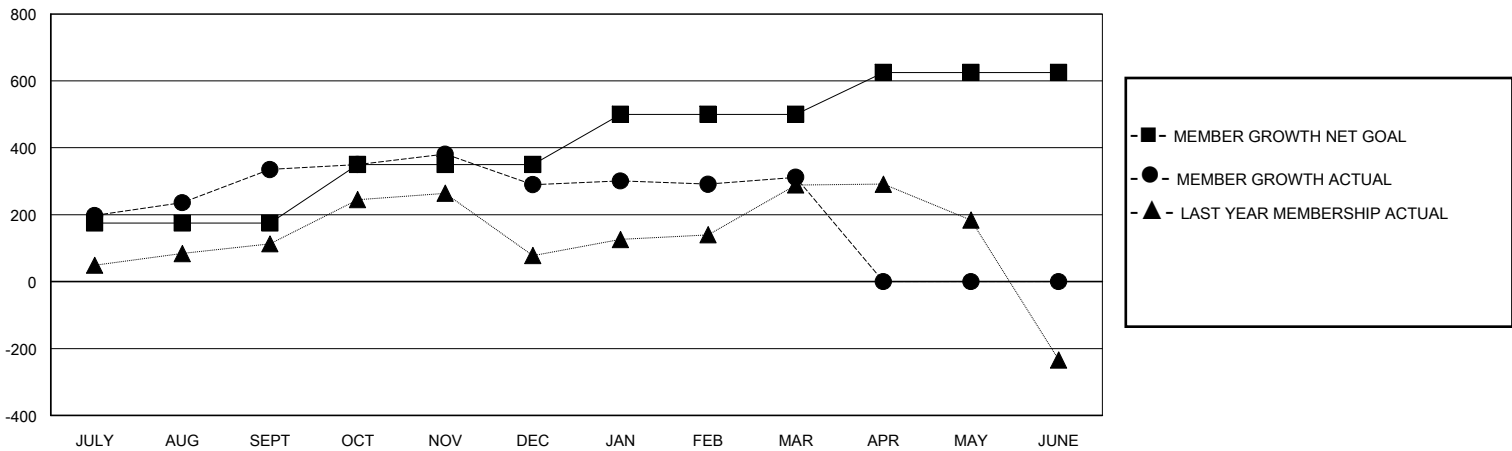
Clubs			
RESULTS FOR 2023-2024			
QUARTER	NEW CLUB GOAL	NEW CLUBS	DROPPED CLUBS
JULY/AUG/SEPT	5	10	2
OCT/NOV/DEC	0	3	3
JAN/FEB/MAR	5	0	2
APR/MAY/JUNE	0	0	0

Members			
RESULTS FOR 2023-2024			
QUARTER	MEMBER GROWTH NET GOAL	MEMBER GROWTH ACTUAL	DROPPED MEMBERS ACTUAL (including transfers)
JULY/AUG/SEPT	175	563	209
OCT/NOV/DEC	175	190	233
JAN/FEB/MAR	150	122	76
APR/MAY/JUNE	125	0	0

GOALS AND ACTUAL NEW CLUBS CUMULATIVE



GOALS AND ACTUAL MEMBERS CUMULATIVE



<b>DROPPED CLUBS: 7</b>	131 CLUBS OF 186 ADDED 1 OR MORE NEW MEMBERS	<b>GENDER DISTRIBUTION</b>	
		MALE 5,106 (79.37%)	FEMALE 1,327 (20.63%)
<b>DROPPED MEMBERS</b>		<a href="#">CLICK HERE FOR CUMULATIVE MEMBERSHIP DATA</a>	TOTAL FAMILY UNIT MEMBERS 2,254
DECEASED 16	CLUB CANCELLED 111		FAMILY MEMBERS PAYING HALF DUES 1,194
OTHER 391	TOTAL 518		